

Toll Free: MA 800-792-5426 N.E. 800-343-5870



NEW ENGLAND SIGN SUPPLY
7 ROESSLER ROAD
WOBURN MA 01888
TEL. (781)-938-1498
FAX (781)-935-3194

DIGITAL GUIDE

Fall 2007

“Experience you can count on since 1936”



Design, Print and Installation by:
Armstrong Sign and Design
Printer: Roland SolJet Proll
Media: 3MIJ180C



New England's Full Line Sign Supplier

Digital Print Devices

EDGE FX



Roland XC-540



Solara UV



Roland VP



Plotters



enVision 750

enVision 375



Roland GX Series

Royal Sovereign Cold Laminators



RSC-1400C

RSC-1650C



Heat Press



DK20SP

JetPress



"Let our experience
be your guide"



New England's Full Line
Sign and Digital
Distributor

ALL PRICES SUBJECT TO
CHANGE WITHOUT NOTICE.

Table of Contents

Equipment:

	Roland EcoSolvent Printers	*****	1
	Gerber Printers	*****	1
	Gerber & Roland Plotters	*****	2
	Royal Sovereign Laminators	*****	2
	Heat Press	*****	2
3M Vinyl	3M IJ Series Film	*****	3-4
	3M Glossary	*****	4
	3M Textured Surface	*****	5
	3M Textured Material Tools	*****	5
SignGold	SolGold	*****	5
	3M Selector Guide	*****	6
	3M Overlaminates	*****	7
	Application Tools	*****	7-8
FDC Products	Intermediate Film	*****	8
	Window Film 7260	*****	9
	Intermediate Translucent 7270	*****	9
	Reflective Film 7300	*****	9
	Cast Vinyl	*****	9
	Laminate Films	*****	9-10
LG Products	Vizuon Print	*****	10
	Banner Material	*****	10-11
	FDC Overlamine Chart	*****	12
Roland Media	Roland Vinyls	*****	13
	Roland Papers	*****	13
	Roland Banner	*****	13
US Banner	Crown Banner	*****	14
	Pearl Banner	*****	14
Inks	Roland Eco-Solvent Inks	*****	15
	Gerber Solara	*****	15
Cadlink	SignLab Software	*****	15
Application Tape	TransferRite Ultra 582/592	*****	16
	TransferRite Protectrite	*****	16
	R-Tape Conform 4075 RLA	*****	16
	R-Tape Digimask RLA	*****	16
Gerber Material	FX Foils	*****	17-20
	Edge Foils 1 and 2	*****	20-23
	HP 220 Vinyl	*****	24
	HP 230 Translucent	*****	25
	Controltac 180	*****	25
	Gerber Specialty Materials	*****	26-29
Banner Accessorie:	Grommet Machine	*****	30
	Grommets	*****	30
	Banner Clips	*****	30
	Banner Tape	*****	30
	Wall Mount Racks	*****	30
Line Card	Line Card	*****	31

Roland Digital Printers

SOLJET PRO III XC-540

The SOLJET PRO III XC-540 is the ultimate high-volume production tool for stunning indoor and outdoor banners, signs, vehicles, decals, POP displays and more. Numerous upgrades make this the industry's most advanced printer/cutter including an impressive maximum print speed of 441 sqft./hr. Engineered to support high-volume environments, the XC-540 delivers vibrant 6 color CMYKLcLm images, features a tri-heating system and advanced media feed and automatic take-up system, and can be upgraded with an optional dryer/blower. The Soljet Pro III now has a 2-year warranty.

NEW! VersaCAMM VP-300 and VP-540

The #1 best-selling inkjet in the durable graphics industry is now better than ever.

VersaCAMM VP is our fastest and most precise VersaCAMM to date and the world's most versatile, reliable and easy-to-use printer/cutter. Featuring accelerated print speeds, an optional heavy-duty media take-up system, numerous hardware upgrades and powerful VersaWorks 2.2 RIP software, the VersaCAMM VP makes it easier than ever to print and contour cut 4-color CMYK signs, banners, billboards, POP displays, labels, decals, vehicle and floor graphics, heat transfers for apparel and more. The VersaCAMM VP is also backed by Roland's two-year trouble-free warranty, the industry's longest bundled service and support contract.

VersaCAMM® SP-300V & SP-540V

The VersaCAMM® is the perfect high-performance production tool for creating colorful decals, labels, banners, posters, vehicle and floor graphics, apparel decoration and just about any sign imaginable. Based on the Roland's acclaimed 4-color printing and contour cutting technology, the VersaCAMM achieves a maximum print speed of 114-square-feet per hour (SP-540V) and operates unattended – delivering 1440 x 1440 dpi printing and precision contour cutting together in one easy step. With an advanced media handling system, it produces brilliant, photorealistic graphics on a full range of coated and uncoated media using ECO-SOL MAX ink.

VersaWorks 2.2 Advanced RIP Software

Developed by Roland exclusively for Roland wide-format inkjet devices, VersaWorks 2.2 RIP Built on the latest Adobe PostScript Engine, VersaWorks 2.2 is better than ever, upgraded with powerful new features including the Roland Color system. Roland Color is a complete spot color fidelity system allowing professionals to quickly and easily match logo colors and other corporate identity elements. Roland Color features spot-color matching tools that help ensure color accuracy, optimize media and boost overall productivity. Software offers powerful features and an easy-to-use interface for outstanding results print after print.

Gerber Scientific Digital Devices

GERBER EDGE™ FX

The GERBER EDGE FX is an advanced digital printing solution that is designed for sign makers, screen printers, and other graphics professionals seeking to quickly produce indoor and outdoor highly customized, highly profitable short-run graphics. The EDGE FX is a thermal transfer device that uses heat and pressure to transfer resin-based pigments to over 30 different substrates.

GERBER SOLARA™ UV 2: Versatile and Intelligent

The GERBER SOLARA UV2 is a large format, hybrid, ultraviolet (UV) inkjet printer. Versatile and intelligent, SOLARA UV2 prints either roll-to-roll or as a flatbed and can accommodate a variety of materials up to 60" wide, including rigid materials up to 1/2" thick (13 mm). Simply hook on flatbed tables and print on rigid substrates of any length.

Equipment Leasing Available. Call NESSCO Today for a Lease Application !

Vinyl Cutting Machines

Gerber enVision™ 375

The enVision™ 375, 15" tabletop sprocket-feed plotter, is designed for the rigors of everyday use. This workhorse machine offers the ultimate in speed, reliability and durability. The enVision™ 375 runs on Gerber OMEGA™ software, as well as on most popular design software platforms supporting HP-GL. This enVision plotter offers ultra-precise tracking and automatic material alignment and is the fastest sprocket-feed plotter currently on the market!

Gerber enVision™ 750

The enVision™ 750, 30" sprocket-feed plotter is designed for the rigors of everyday use. This workhorse machine offers the ultimate in speed, reliability and durability. The enVision™ 750 runs on Gerber OMEGA™ software, as well as on most popular design software platforms supporting HP-GL. The enVision™ plotter offers ultra-precise tracking and automatic material alignment and is the fastest sprocket-feed plotter currently on the market!

Gerber P2C™ Plotters

Gerber's new P2C plotter line features three distinct formats to more readily meet the needs of today's sign professional. Whether you choose the class-leading, ultra wide-format P2C 1600, or any one of the other P2C formats - from the moment you cut your first job, you'll be very glad you did. Available in three sizes: 24", 48", and 63".

Roland GX Series Vinyl Cutters

In addition to Roland's legendary reliability, the GX Series offers enhanced versatility and ease of use. Vehicle graphics, window tint, signage, stencils and even pinstriping come out looking crisp and clean. But that's just the beginning! Its ability to contour cut pre-printed graphics lets you create professional vehicle wraps and even heat transfers for garments. Available in four sizes: 24", 36", 46", and 54"

Royal Sovereign Cold Laminators

RSC 1400C Cold Laminator

New 55" width cold laminating machine. Economical, quality cold laminator with high quality silicone rubber rollers. Designed to mount up to .6" or 15 mm. The RSC-1400C has 9 speed settings up to 16.5 feet per minute. Complete with chain-drive synchronized take-up device. Auto-grip hubs for easy replacement of film rolls. The RSC-1400C is ideal for outdoor signage, vehicle wraps, fleet graphics, and POP and trade show displays.

RSC 1650C Cold Laminator

New best in class dual roll 1650 mm or 65" cold laminator. The ideal multi-function laminator for sign and display shops. Complete with heavy duty silicone rubber rollers. (15 mm or 3.75" in diameter.) Designed to mount up to .6" or 15mm. Remote control foot pedal and mouse for easy operation. RSC-1650C has 9 speed settings up to 16.5 feet per minute. Complete with chain-drive synchronized take-up device. Ideal for outdoor signage, vehicle wraps, fleet graphics, and POP and trade show displays.

Heat Press

DK20SP Heat Press

The Digital Knight DK20SP is an air-operated, automatic 16x20 swing-away heat press with a state-of-the-art control system and heavy-duty solid steel welded framework. The smooth automatic pressing and pushbutton activation provides a productive, fatigue free operation. This machine boasts a lifetime warranty on the heat platen, and an unprecedented 3-year warranty on the heat-control electronics.

JetPress

The Jet machines are a heavy duty line of low-cost, economical swing away heat presses. Intended for start-ups, home use and non-commercial hobby-oriented transfer printing. The JetPress machines are ideal for ink-jet, bubble-jet, laser, copier, and sublimation iron-on transfer paper users seeking professional quality imprinting results, without the cost associated with commercial press equipment.

NESSCO - New England's Full Line Sign and Digital Distributor.

3M Vinyl & Vehicle Wrap Products

3M IJ180C-10 ControlTac™ with Comply

2-mil, white cast vinyl film with a removable, pressure-activated, repositionable gray adhesive containing air-release channels. Available in white. 8 year unprinted durability. Best choice for vehicle wraps and large graphics.

	Roll	Sqft.
30" x 25 yd. *****	\$182.91	\$0.98
30" x 50 yd. *****	\$349.13	\$0.93
54" x 25 yd. *****	\$329.23	\$0.98
54" x 50 yd. *****	\$595.00	\$0.88

3M IJ180Cv2-10 ControlTac™ with Comply

2-mil, White cast vinyl film with a removable, pressure-activated, repositionable gray adhesive containing invisible air-release channels. 8-year unprinted durability. Best choice for vehicle wraps and large graphics.

	Roll	Sqft.
30" x 25 yd. *****	\$182.91	\$0.98
30" x 50 yd. *****	\$349.13	\$0.93
54" x 25 yd. *****	\$329.23	\$0.98
54" x 50 yd. *****	\$595.00	\$0.88

3M IJ160C-10 ControlTac™ with Comply

4-mil, white calendared vinyl with a removable, pressure-activated, repositionable gray adhesive containing air-release channels. 5 year unprinted durability. Good for short to medium term vehicle and display graphics.

	Roll	Sqft.
30" x 50 yd. *****	\$250.27	\$0.67
54" x 50 yd. *****	\$450.46	\$0.67

3M IJ3552-10 ControlTac™ Plus with Comply

This 2 mil white cast film is intended for short term vehicle graphics where fast, easy installation, and clean, easy removal is required. Repositional gray adhesive. 2 year unprinted durability. Best removable short term cast film.

	Roll	Sqft.
54" x 25 yd. *****	\$258.02	\$0.76

3M IJ3555 Calendared Matte White

This is a 4 mil white calendared, opaque vinyl used for short term bus, fleet, interior and exterior graphic signs that need to be positionable and removable. (Up to 2-year durability.) Ideal for short term promotional graphics.

	Roll	Sqft.
30" x 50 yd. *****	\$212.29	\$0.57
54" x 50 yd. *****	\$382.12	\$0.57

3M IJ35 ScotchCal™ Graphic Film

This is a 3.2-mil white calendared matte or gloss vinyl film with a permanent, pressure sensitive clear adhesive. 3 year unprinted durability. Excellent imageability at a low cost.

	Roll	Sqft.
Gloss/White - 10		
54" x 50 yd. *****	\$174.59	\$0.26
Matte/White - 20		
54" x 50 yd. *****	\$174.59	\$0.26

3M Scotchcal™ Translucent Film IJ3630-20

2 mil white cast vinyl film is intended for both warranted and promotional applications. It is designed for making interior and exterior, flat and thermoformed backlit graphics. Clear permanent adhesive. 6 year unprinted durability.

	Roll	Sqft.
30" x 25 yd. *****	\$302.84	\$1.62
54" x 25 yd. *****	\$547.84	\$1.62

3M™ Scotchlite™ Flexible Reflective IJ680-10CR

This is an easy to apply and remove 7-mil white retroreflective film. This medium to long term durable film is designed for commercial vehicle railroad graphics, corrugated surfaces and striping. IJ680-10CR features Controltac with Comply adhesive. Best reflective available for fleet graphics.

	Roll	Sqft.
24" x 10 yd. *****	\$210.15	\$3.50
48" x 10 yd. *****	\$420.29	\$3.50

Tech. Notes: Vehicle Wraps

Choosing the right material is vital in your vehicle wrap application. For longer term jobs a 2 mil cast vinyl is recommended. Choose a vinyl with an air release adhesive for an easier more professional application. Cast films are manufactured very thin with excellent durability and stability characteristics. These films when correctly applied have an outdoor unprinted durability of 5 plus years. For shorter term applications, or if price is a factor there are calendared economical films. These films have less conformability and are not as stable. (Some shrinking may occur). This vinyls can last up to 1 year when properly applied. All vehicle wraps should be laminated.

3M Vinyl & Vehicle Wrap Products

3M™ Scotchcal™ IJ3650-114 Transparent

IJ3650-114 (transparent) is piezo ink jet printable, 2-mil film with a clear permanent, pressure-sensitive adhesive. 5 year unprinted durability.

	Roll	Sqft.
54" x 50 yd. *****	\$ 585.07	\$0.87

3M Scotchlite™ Changeable Reflective 5100

Use this 3 to 3.5 mil, white film to make changeable, retroreflective, short term exterior bus graphics and commercial vehicle or fleet graphics. White removable adhesive. 4 year unprinted durability. Good mid-range product.

	Roll	Sqft.
48" x 10 yd. *****	\$271.45	\$2.26

3M Glossary

3M™ Comply™ Adhesive - 3M trade name for adhesive characteristic that permits air bubbles to escape through channels in the adhesive as it is applied.

3M™ Controltac™ Plus Graphic Film - 3M trade name for films with pressure activated adhesive that can be positioned and repositioned until moderate pressure is applied.

3M™ Scotchcal™ Graphic Film - 3M trade name for films with pressure sensitive adhesive that bonds to the substrate with light pressure.

3M™ Scotchcal™ Overlamine - A clear film that can enhance or change the gloss of a graphic as well as provide resistance to dirt, abrasion and harmful UV light.

Changeable adhesive - A feature found in some short-term graphic films that allows easy graphic removal without heat, chemicals or accessories, leaving little residue.

Permanent adhesive - An adhesive property that makes it difficult to remove a graphic even with heat, chemicals or accessories; may leave an adhesive residue and may damage substrate when removed.

Removable adhesive - An adhesive property that allows some long-term films to be removed with heat, chemicals and/or accessories with some adhesive residue.

Pressure-sensitive adhesive - An adhesive property that bonds to a substrate with light pressure.

Pressure-activated adhesive - An adhesive that is positionable and repositionable until moderate pressure is applied bonding it to the substrate.

Conformable - A feature in some graphic films that allows it to conform around curves and rivets.

3M™ Scotchcal™ Reflective Graphic Films - 3M Trade name for a highly reflective graphic film that allows an image to be clearly seen in low or no light situations when a light source is directed at the image.

Tech Notes: Applying Vinyl

All successful vinyl applications start with a clean work area. First, remove all dirt and grime with a commercial detergent and water. To remove grease, oil, wax or other contaminants, clean with isopropyl alcohol (IPA) to make sure that no oily residue from the other solvents remains. A clean surface is vital for a strong adhesion.

Equipment Leasing Available. Call NESSCO Today for a Lease Application!

3M Textured Surface

3M™ Scotchcal™ IJ8624

Film IJ8624 is a 2 mil cast removable graphic film designed for solvent-based piezo inkjet printing. When heated and applied correctly, this film conforms to moderately textured surfaces on both flat and curved substrates, including concrete block, brick, industrial stucco and tile similar to those found in sports arenas, stadiums, retail and public venues.

	Roll	Sqft
54" x 25 yd.*****	\$296.27	\$0.88
54" x 50 yd.*****	\$564.32	\$0.84

3M™ Scotchcal™ Luster Overlaminate 8524

Overlaminate 8524 is a 2 mil cast film that provides durable protection when applied to selected 3M graphic films. It is ideally suited for use on 3M films that are specifically designed to conform with heat to moderately textured surfaces, providing better handling and removal characteristics. Heat application is required.

	Roll	Sqft
54" x 25 yd*****	\$217.74	\$0.65
54" x 50 yd*****	\$414.74	\$0.61

3M Textured Materials Tools

TSA-2 Textured surface applicator is designed for corners and grout lines.



	Each
TSA-2 *****	\$153.98

TSA-3 Textured Surface applicator is designed for corners and detailed work.



	Each
TSA-3 *****	\$153.98

Tech Tip TSA-2

1. Wear a heat resistant glove on the hand that holds the TSA-2 applicator.
2. Direct the heat gun toward the motor joint. Heat the film until warm (usually takes about 2 seconds) and immediately begin rolling the film into the joint with applicator TSA-2.
3. Using applicator TSA-2, closely following the heat gun, move continuously at about 2 inches per second and completely past the outer open edge of graphic.

Tech Tip TSA-3

1. Wear a heat resistant glove on the hand that holds the TSA-3 applicator.
2. Direct the heat gun at the top edge of the film. Heat the film until warm - usually takes only a few seconds. Immediately begin rolling the film into the joint with applicator TSA-3.
3. With applicator TSA-3 closely following the heat gun, move continuously at about 2 inches per second and completely past the edge of the graphic.

SOLGOLD



Available in Florentine Swirl, Satin Surface, Large Engine Turn or LusterGuild

	Roll	Sqft.
Gloss/Matte		
24" x 2 yd. *****	\$168.75	\$14.06
24" x 5 yd. *****	\$421.90	\$14.06
24" x10 yd. *****	\$843.80	\$14.06

SolGold 22 KT. Printable Gold

SolGold; 22 karat gold vinyl for this "print and cut" market that is revolutionizing how signs and graphics are produced in the twenty first century. Fully compatible with all popular Eco-Sol, High Solvent and Lyson inks, SolGold is perfectly suited for printing with Roland, Splash of Color, Mamaki, Seiko, Graphtec and Mutoh printers, among others, and is available in 24" (61 cm) wide rolls. SignGold offers a clear Tedlar laminate to protect your images from UV and harmful weather.

Visit Our Website @ www.nesignsupply.com

3M Digital Materials Product Selector Guide

Products	Product Description			
	Vehicles	Signs	Walls	Windows
IJ180C-10	X	X	X	
IJ180CV2-10	X	X	X	
IJ160C-10	X	X	X	
IJ160-10	X	X	X	
IJ3552	X			
IJ3630-20		X	X	
IJ3650-114		X	X	
IJ3555	X	X	X	
IJ35-20		X	X	
IJ680CR-10	X			
IJ680-10	X	X		
IJ5100R	X	X		
				2 mil cast opaque film, high strength removable adhesive with Controltac and Comply
				2 mil cast opaque film, high strength removable adhesive with Controltac & Comply v2
				4 mil calendared opaque film, medium strength removable adhesive with Controltac and
				4 mil calendared opaque film, medium strength removable adhesive with Controltac
				2 mil cast opaque film, medium strength changeable adhesive with Controltac and Comply
				2 mil cast translucent, high strength permanent Scotchcal adhesive
				2 mil cast clear, high strength permanent Scotchcal adhesive
				4 mil calendared opaque film, medium strength changeable Scotchcal adhesive
				3.2 mil calendared opaque matte film, permanent adhesive, 3 years expected
				6 mil calendared reflective film, high strength removable adhesive with Controltac and Comply
				6 mil calendared reflective film, high strength removable adhesive with Controltac
				4 mil calendared reflective film, medium strength removable Scotchcal adhesive

Overlaminates

8518		2 mil cast gloss overlaminate to be used with vehicles, signs, or walls
8519		2 mil cast luster overlaminate to be used with vehicles, signs, or walls
8520		2 mil cast matte overlaminate to be used on vehicles, signs or walls
8914		2 mil optically clear overlaminate to be used with IJ8171 perforated window film
8524		2 mil cast luster overlaminate to be used with IJ8524 Textured wall film

New England Sign Supply
We Carry a Complete Line of Sign and Display Substrates

3M Overlamine Products

3M™ Scotchcal™ Gloss Overlamine 8518

2-mil film that can enhance gloss and provide additional ultraviolet and durable physical protection for selected digitally-imaged graphic constructions. It is designed for cold roll lamination only.

		Roll	Sqft
30" x 50 yd.	*****	\$241.92	\$0.65
54" x 25 yd.	*****	\$217.73	\$0.65
54" x 50 yd.	*****	\$414.74	\$0.61

3M™ Scotchcal™ Luster Overlamine 8519

This 2 mil luster overlamine is approved for use with selected piezo ink jet printers to provide graphics additional ultraviolet and physical protection. It is designed for cold roll lamination only.

		Roll	Sqft.
30" x 50 yd.	*****	\$266.75	\$0.71
54" x 25 yd.	*****	\$240.08	\$0.71
54" x 50 yd.	*****	\$480.15	\$0.71

3M™ Scotchcal™ Matte Overlamine 8520

This 2 mil matte overlamine is approved for use with selected piezo ink jet printers to provide additional ultraviolet and physical protection to graphics. It is designed for cold roll lamination only.

		Roll	Sqft.
54" x 25 yd.	*****	\$316.02	\$0.94
54" x 50 yd.	*****	\$632.02	\$0.94



3M Application Tools

3M™ Air Release Tool 391x

Used to puncture film that has already been applied to a substrate to remove entrapped air bubbles.

		Each
391X.	*****	\$23.50



3M™ Hand Applicator PA1-G Gold, 25/ctn

This reusable squeegee-type applicator is constructed of durable vinyl. When hand applying film or premask, it is the perfect solution for smooth substrates.

		Each	Carton
3M-PA1G	*****	\$3.64	\$73.75

3M™ Hand Applicator PA1-B Blue, 25 per ctn

This inexpensive, reusable squeegee-type applicator is flexible yet durable. When hand applying film or premask, this tool is the perfect solution for FRP or other textured surfaces..

		Each
3M-PA1B	*****	\$0.65



3M™ Low Friction Sleeve SA-1, 100/pkg

This reusable paper sleeve slips over the PA-1 applicators to protect film or other surfaces from marking and scratches.

		100 Pack
3M-SA-1	*****	\$35.57

3M™ Power Grip Applicator CPA-1™

This applicator is designed only for films with the Comply™ performance feature. The applicator makes it easy to cover large areas with a uniform distribution of pressure. The felt-wrapped edge disperses air evenly for a virtually bubble-free application, and the rounded grip is more comfortable for the installer.

		Each
3M-CMP-1	*****	\$10.38



3M™ Rivet Brush Applicator RBA-1.

This rivet brush applicator can make it easier to install graphics over rivets.

		Each
3M-RBA-1	*****	\$8.80



FDC Vinyl Products

FDC7260 Window Perforated Film

A 7.2 mil. perforated White / Black 2nd side vinyl. This product is used for one-way vision through windows for the temporary marking of retail, vehicle and other advertising graphics. 7260 has a 2-year removable, clear adhesive. 2-year unprinted durability. Must use FDC 3-8957 laminate with this product.

50/50 Ideal for Vehicle Window Graphics

Gloss Finish:	Roll	Sqft.
24" x 25 yd *****	\$262.00	\$1.75
30" x 25 yd *****	\$384.12	\$2.05
54" x 25 yd *****	\$579.43	\$1.72

65/35 Greater print area. Ideal for POP applications.

Gloss Finish:	Roll	Sqft.
24" x 25 yd *****	\$262.00	\$1.75
30" x 25 yd *****	\$384.12	\$2.05
54" x 25 yd *****	\$579.43	\$1.72

FDC 7300 Premium Reflective Vinyl Film

A 5.9 mil white premium calendered Engineering Grade, gloss reflective film that meets or exceeds the applicable requirements of federal specifications of ASTM 4956-99 and L-S 300C. Clear, permanent adhesive. 7 year unprinted outdoor durability. Great product for vehicles and general purpose signage.

Gloss	Roll	Sqft.
30" x 50 yd *****	\$490.79	\$1.31
48" x 25 yd *****	\$396.01	\$1.32

FDC 7270 Intermediate Translucent Vinyl Film

A 3.2 mil matte white calendered pvc film. 7270 has a 5-year outdoor durability with a permanent, clear adhesive. 7270 is ideal for indoor/outdoor full color backlit signage that includes menu boards and p.o.p advertising.

Matte White	Roll	Sqft.
54" x 25 yd *****	\$194.33	\$0.58
54" x 50 yd *****	\$388.66	\$0.58

FDC7102 Repositionable Cast Vinyl

A 2.0 mil. white gloss premium cast vinyl designed for solvent ink printing on large format solvent printers. This product has a repositionable, grey, permanent adhesive for ease of application. 5-7 years unprinted durability. Smooth surface with the performance of a cast film.

Gloss	Roll	Sqft.
30" x 50 yd *****	\$229.68	0.61
54" x 50 yd *****	\$429.85	0.64

FDC 7000 Premium Cast Laminate

A 2 mil cast gloss clear lamination film. 7 year outdoor durability. Protects digital prints from moisture, abrasion, and harmful UV rays. Enhances image colors with excellent clarity. Best overall performance characteristics.

Gloss/Matte	Roll	Sqft.
30" x 50 yd *****	\$206.85	\$0.55
48" x 25 yd *****	\$193.60	\$0.65
54" x 50 yd *****	\$372.32	\$0.55

FDC7010 Calendered UV Gloss Laminate

A 3.2 mil calendered vinyl laminate. 7010 has a clear, permanent adhesive. 3 Year outdoor durability. Protects digital prints from moisture, abrasion, and harmful UV rays.

Gloss	Roll	Sqft.
30" x 50 yd *****	\$89.92	\$0.24
54" x 50 yd *****	\$162.09	\$0.24

FDC7010 Calendered UV Matte Laminate

3.2 mil calendered vinyl laminate film in a Matte finish. 7010 has a clear, permanent adhesive. 3 Year outdoor durability. Protects digital prints from moisture, abrasion, and harmful UV rays.

Matte	Roll	Sqft.
30" x 50 yd *****	\$89.92	\$0.24
54" x 50 yd *****	\$162.09	\$0.24

Visit Our Website @ www.nesignsupply.com

FDC Vinyl Products

FDC7010 Calendered UV Luster Laminate

A 3.2 mil calendered vinyl laminate film with Luster finish. 7010 has a clear, permanent adhesive. 3 Year outdoor durability. Protects digital prints from moisture, abrasion, and harmful UV rays.

Luster	Roll	Sqft.
30" x 50 yd*****	\$89.92	\$0.24
54" x 50 yd*****	\$162.09	\$0.24

FDC 3-8957 Ultra Gloss Clear Laminate Film

A 2 mil cast laminate film with Ultra Gloss finish. 3-8957 has a clear, permanent adhesive. 5 Year outdoor durability. Protects digital prints from moisture, abrasion, and harmful UV rays. For use with FDC 7260 perforated window film.

Gloss	Roll	Sqft.
24" x 25 yd *****	\$117.45	\$0.78
30" X 25 yd*****	\$132.28	\$0.71
54" x 25 yd *****	\$238.09	\$0.71

LG Vizuon Vinyl and Banner Products



VizuonPrint LD3810G/M

VIZUONPRINT™

4 mil monomeric PSA film for indoor sign and mid to short term digital printing. 3 year outdoor durability with proper lamination. Grey permanent adhesive. Short term vehicle application for flat surfaces or simple curves.

Gloss White	Roll	Sqft.
30" x 50 yd*****	\$77.67	\$0.21
54" x 50 yd*****	\$133.13	\$0.20

Matte White	Roll	Sqft.
30" x 50 yd*****	\$77.67	\$0.21
54" x 50 yd*****	\$133.13	\$0.20

VizuonPrint LD385AG

VIZUONPRINT™

3.2 mil. calendered gloss opaque vinyl PSA film with advanced air-egress technology. Removable, grey, solvent-based adhesive. 3 year durability. Short term vehicle application for flat surfaces or simple curves.

Gloss White	Roll	Sqft.
30" x 50 yd *****	\$109.22	\$0.29
54" x 50 yd *****	\$187.50	\$0.28
60" x 50 yd *****	\$208.33	\$0.28

Matte White	Roll	Sqft.
30" x 50 yd *****	\$109.22	\$0.29
54" x 50 yd *****	\$187.50	\$0.28
60" x 50 yd *****	\$208.33	\$0.28

Available Fall 2007

VizuonPrint LP3812 Laminating Film

3.6 mil. Calendered laminating film. 3 year outdoor durability when properly applied. Optically clear adhesive for superior clarity.

Gloss Clear	Roll	Sqft.
30" x 50 yd*****	Coming in October	
54" x 50 yd*****	\$234.38	\$0.35
60" x 50 yd*****	\$260.40	\$0.39

Matte Clear	Roll	Sqft.
30" x 50 yd*****	Coming in October	
54" x 50 yd*****	\$234.38	\$0.35
60" x 50 yd*****	\$260.40	\$0.39

VizuonBannux USB Smooth Banner 12 oz.

Ultra Smooth Banner is a 12 oz. block out banner product. Designed for indoor and short term outdoor advertising. Smooth on both sides for double sided printing.

Matte White	Roll	Sqft.
39" x 33 yd Special order	\$101.44	\$0.32
54" x 33 yd Special order	\$140.45	\$0.32
63" x 33 yd Special order	\$163.86	\$0.32
39" x 50 yd Special order	\$153.69	\$0.32
54" x 50 yd *****	\$212.80	\$0.32
63" x 50 yd Special order	\$248.26	\$0.32

Stock Orders Entered by 2 PM ... Same Day UPS Shipping !!!

LG Vizuon and Banner Products

VizuonBannux USB Smooth Banner 14 oz.

Ultra Smooth Banner is a 14 oz. block out banner product. Designed for indoor and short term outdoor advertising. Smooth on both sides for double sided printing.

White/Matte		Roll	Sqft.
39" x 33 yd	Special order	\$118.40	\$0.37
54" x 33 yd	*****	\$163.97	\$0.37
63" x 33 yd	Special order	\$191.29	\$0.37
39" x 50 yd	Special order	\$179.42	\$0.37
54" x 50 yd	*****	\$248.43	\$0.37
63" x 50 yd	Special order	\$289.83	\$0.37



LG Chem

VIZUONPRINT™
 VIZUONCAL™
 VIZUONCAST™
 VIZUONBANNUX™
 AIRFREE™

VizuonBannux UGS 13 oz. VIZUONBANNUX™

Bannux Ultra Gloss white Supreme is a sturdy 13 oz. product for indoor / outdoor applications. 1 year outdoor durability.

Gloss/White		Roll	Sqft.
30" x 33 yd	*****	\$55.21	\$0.22
54" x 33 yd	*****	\$94.68	\$0.21
63" x 33 yd	Special order	\$110.44	\$0.21
39" x 50 yd	*****	\$103.60	\$0.21
54" x 50 yd	*****	\$143.45	\$0.21
63" x 50 yd	Special order	\$167.35	\$0.21

**Reach out for
 the ideal™**

VizuonBannux 5500 -10 oz VIZUONBANNUX™

A 10 oz. product developed for indoor/outdoor application. 1 year outdoor durability.

Gloss/Matte		Roll	Sq ft.
39" x 33 yd	*****	\$65.25	\$0.20
54" x 33 yd	*****	\$90.35	\$0.20
63" x 33 yd	Special order	\$105.42	\$0.20
39" x 50 yd	Special order	\$98.87	\$0.20
54" x 50 yd	*****	\$136.89	\$0.20
63" x 50 yd	Special order	\$159.71	\$0.20

VizuonXIGN™

An innovative new product that provides superior stability over other banners to minimize curling in banner displays. Smooth matte, 2-sided material is printable on both sides.

Gloss/Matte		Roll	Sqft.
39" x 33 yd	*****	\$191.71	\$0.60
54" x 33 yd	*****	\$265.44	\$0.60

Tech. Note: Vehicle Wraps.

After cleaning, preparation is the next most important step in applying vehicle wraps. It is always a good idea to plan your install before starting. Determine which piece goes where and which piece you are going to start with. Remember you really have only one chance to get it right after you take off the backing paper (liner). Today's material does give you some degree of repositionability, however this is generally intended so the installer can "snap up" a small area for repositioning, not remove an entire panel to start over.

NESSCO - New England's Full Line Sign and Digital Distributor

Roland Media and Accessories

Roland ESM-CCV2 Clear Calendered Vinyl

This new improved version of our high-quality 3 mil clear adhesive-back uncoated vinyl has an optically clear adhesive and a clear polyester liner. It is designed for many types of graphic applications including use as an overlaminated film. It images nicely in a variety of print modes and has a permanent adhesive.

Clear	Roll	Square ft.
30" x 75 ft *****	\$79.95	\$0.43
54" x 75 ft *****	\$139.95	\$0.41

Roland ESM-GCVP Glossy Calendered Vinyl

This high-quality 3 mil glossy adhesive-back uncoated vinyl is designed for many types of graphic applications. It images nicely in a variety of print modes and has a permanent adhesive.

White	Roll	Square ft.
30" x 75 ft *****	\$79.95	\$0.43
54" x 75 ft *****	\$139.95	\$0.41

Roland ESM-PCV2 White Cast Vinyl

This premium-quality 2 mil glossy cast uncoated vinyl has a permanent adhesive so it is durable for a variety of graphic applications including fleet graphics. It is extremely durable and conformable to rivets and irregular curves or indentations, but lamination is highly recommended for fleet applications or to protect images from abrasion and chemical deterioration.

White	Roll	Square ft.
30" x 80 ft *****	\$209.95	\$1.05
54" x 80 ft *****	\$369.95	\$1.03

Roland PCM-PMP2 7 mil Matte Paper

This product is heavyweight and affordable, and an excellent choice for color graphics applications including posters, point of purchase displays, trade show and board room graphics. The high opacity and exceptional white point, along with this product's ability to handle heavy ink load, assure a quality reproduction.

White	Roll	Square ft.
30" x 100 ft *****	\$99.95	\$0.40
50" x 100 ft *****	\$164.95	\$0.40

Roland PCM-HTM Opaque Heat Transfer

Full-color graphics for all types of transfers on light or dark colored cotton or cotton blend garments. This product should be printed right reading as with a standard decal, then placed on the garment to be transferred with a heat press and covered with a Teflon pad for transferring.

White	Roll	Square ft.
24" x 50 ft *****	\$154.95	\$1.55

Roland ESM-SGP Solvent Glossy Paper

This 7.5 mil glossy paper was specially coated for solvent inkjet printing. It has a good white point and gloss level for a wide variety of indoor graphic applications. Full-color graphics for indoor applications such as photographic reproductions, trade show graphics, and point-of-purchase displays.

White	Roll	Square ft.
30" x 100 ft *****	\$79.95	\$0.32
54" x 100 ft *****	\$134.95	\$0.30

Roland ESM-FRSB Flame Retardant Banner

This premium-quality one-sided 16 oz. scrim banner uncoated vinyl is specially treated and certified flame retardant. It has a high tensile strength, is tear resistant, and is perfect for both indoor and outdoor applications. It is dimensionally stable and can be hemmed and grommeted for a superb finished look.



White	Roll	Square ft.
30" x 66 ft *****	\$177.83	\$1.08

Tech. Notes Vehicle Wraps

When you are ready to apply your printed graphics, survey the vehicle first. Identify all difficult application areas. Start applying vinyl from the back of vehicle. Wind friction will be reduced when driving the vehicle preventing edge curling. For difficult areas such as rounded corners or rivets, heat the vinyl for better conformability and adhesion. All concave and convex areas or edges need to be sealed.

New England Sign Supply
Stock Orders Entered by 2 PM ... Same Day UPS Shipping!!!

US Banner Material

Crown Banner			Pearl Banner		
Crown Products are MADE IN THE U.S.A. for superior quality.			Pearl is an economical imported solvent digital product. Pearl is available in a 13 oz. weight.		
					
10 oz	Roll Size	Roll Price	Gloss Banner	Roll Size	Roll Price
	30" x 25 yd	***** \$60.79		30" x 40 yd	***** \$73.29
	36" x 25 yd	***** \$65.83		36" x 40 yd	***** \$87.93
	51" x 25 yd	***** \$95.00		54" x 40 yd	***** \$131.86
13 oz	Roll Size	Roll Price	Matte Banner	Roll Size	Roll Price
	27" x 25 yd	***** \$78.85		30" x 40 yd	***** \$73.29
	54" x 25 yd	***** \$150.00		36" x 40 yd	***** \$87.93
14 oz	Roll Size	Roll Price		54" x 40 yd	***** \$131.86
	30" x 40 yd	***** \$118.15			
	36" x 40 yd	***** \$128.00			
	48" x 40 yd	***** \$180.66			

Banner Printing Tips

Choosing the right banner for your solvent printer is simple if you ask the correct questions. You need to determine the following information prior to selling and printing your banner.

- | | |
|---|---|
| 1) Is the banner for indoor or outdoor use? | 2) What longevity is required for the banner? |
| 3) What is the distance required for readability? | 4) One side or double side printing? |
| 5) Will the banner be in a windy area? | 6) How will the banner be installed? |

Long term outdoor banners need to be 14 oz material or better. The ends should be hemmed by sewing or using banner or VHB tape. Air vents can also be used to relieve the stress from the wind. Installation method may effect the banner layout. POP and banner stand applications curling may be a factor. Laminating the banner or use LG VizuonXIGN™ will provide greater stability eliminating curl.

Letter size and Viewing Distance

Letter Height	Readability Distance Maximum	Maximum Readability Distance
3"	30 feet	100 feet
4"	40 feet	150 feet
6"	60 feet	200 feet
8"	80 feet	350 feet
10"	100 feet	450 feet

NESSCO - New England's Full Line Sign and Digital Distributor

Roland Ink



ECO-SOL MAX is a remarkable innovation in ink technology. Building on Roland's award-winning eco-solvent ink, ECO-SOL MAX features several new enhancements including faster drying time, higher density, wider color gamut, improved scratch resistance, lower cost per square foot, and broader uncoated media support. In addition, ECO-SOL MAX is virtually odorless, and does not require any special ventilation or environmental equipment.



Cyan	
Magenta	220 ml cartridges \$ 64.99
Yellow	
Black	440 ml cartridges \$ 119.99
Lt Magenta	
Light Cyan	

Gerber Solara UV Printer



The GERBER SOLARA UV2 is a large format, hybrid, ultraviolet (UV) inkjet printer that provides the best color reproduction available from broadest color gamut. SOLARA UV2 prints either roll-to-roll or as a flatbed with only a small conversion process, and can accommodate a variety of materials up to 60" wide including rigid materials up to 1/2" thick (13 mm).



GERBER SOLARA UV Inks

ImagePerfect UV inks for the GERBER SOLARA are specially formulated inks developed for the needs of the sign market by providing a balance between flexibility and durability. They are offered in 230ml cartridges in six color versions: cyan, magenta, yellow, black, violet, and green. Unlike solvent systems, flush cartridges are not offered nor required.

Color	Part Number	Ink Volume	Price
Cyan	P76806D	230ml	\$75.00
Magenta	P76807D	230ml	\$75.00
Yellow	P76808D	230ml	\$75.00
Black	P76809D	230ml	\$75.00
Violet	P76810D	230ml	\$75.00
Green	P76811D	230ml	\$75.00

Cadlink SignLab Software

SIGNLAB 7.1 Packages

Signlab Print & Cut	*****	\$3,200.00
SignLab Vinyl Pro	*****	\$2,100.00
SignLab Vinyl	*****	\$1,300.00
SignLab Designer	*****	\$700.00
Print & Cut Designer	*****	\$1,400.00
Pantone™ Module	*****	\$150.00

SignLab is the right choice for sign makers. It's flexible, powerful and easy to use. Unlike design or illustration software SignLab is designed specifically for sign makers. SignLab also offers a number of modules to aid in custom sign making. Call today for a demo or information packet. We offer a special discount to any customer cross-grading from any other sign software.

New England Sign Supply

Visit Our Website @ www.nesignsupply.com

Application Tape:

TransfeRite Ultra™ 582/592 Tape

TransferRite brand products are the first choice of professional sign makers and screen printers everywhere. Whatever your application, from fleet marking to commercial sign production, you'll find the right product – and the right performance – in the TransferRite line of quality premask and application tapes. 582 is a medium tack and 592 is a high tack adhesive transfer tape.

Sizes	
1 1/4 "	16 "
2 1/4 "	18 "
3 1/4 "	24 "
4 1/4 "	30 "
6 1/2 "	36 "
8 1/2 "	48 "
10 "	54 "
12 "	60 "
14 "	

TransfeRite™ Ultra 1310 Clear Tape

TransferRite Ultra clear is an economical, medium tack clear tape. Dimensionally stable polypropylene with reliable rubber-based adhesive will not haze vinyl. Easy removal from banners and Coroplast. Superior adhesion to liner for increase lay flat properties.

Sizes	Sizes
2 "	14 "
4 "	16 "
6 "	24 "
8 "	30 "
12 "	48 "

R-Tape DigiMask™ with RLA Tape

Designed for the Digital print market Digimask is ideal for inkjet images. Specially formulated with a low tack adhesive, Digimask eliminates wrinkling, tunneling and edge curling. Ideal for inkjet images.

Sizes	Roll Price
30 "	\$74.56
54 "	\$134.20
60 "	\$149.11

R Tape 4075 Conform with RLA™

4075 is a standard grade paper with high tack adhesive. A very popular choice for sign shops. Excellent for small, medium and large-size computer cut letters. Excellent for wet applications. Conform Series® features its advanced RLA™ adhesive technology in release liner adhesion. Because these tapes lay flat and conform to the liners, even when rolled, the Conform Series® products resist wrinkling, tunneling and edge curling.

Sizes	
1 1/4 "	16 "
2 1/4 "	18 "
3 1/4 "	24 "
4 1/4 "	30 "
6 1/2 "	36 "
8 1/2 "	48 "
10 "	54 "
12 "	60 "
14 "	

TransferRite ProtecRite™ 6560 Tape

Designed for the Digital print market ProtecRite is ideal for inkjet images. ProtecRite 6560 is an economical, standard paper with a low tack adhesive. Releases cleanly after installation and protects prints from scratching.

Sizes	Roll Price
30 "	\$70.90
48 "	\$113.50
54 "	\$128.00
60 "	\$142.00



Tech. Notes Vehicle Wraps

Temperature plays an important role in how well a vinyl sticks to a substrate. Vinyl manufacturers generally recommend the temperature be in the range of 50°-90° F with 70°-80° F being the optimum range. Whenever possible, try to apply graphics indoors in a controlled environment. This will help you control the temperature, and also reduces the presence of outside elements i.e. dust, wind, sun and other environmental contaminants in the area.

New England Sign Supply Company

Gerber Foils FX Series

GerberColor FX Foils: Spot Series

Some colors may not be exact matches

Color	Pigment Code	15 Meters	Price	45 Meters	Price	91 Meters	Price
Apple Green	GCS-196	*	*	P77679A	\$89.25	*	*
Aqua	GCS-176	P77680A	\$40.75	*	*	*	*
Atomic Red	GCS-293	P78957A	\$40.75	*	*	*	*
Beige	GCS-49	*	*	P77683A	\$89.25	*	*
Black	GCS-12	*	*	P77684A	\$89.25	P77685A	\$162.69
Brick Red	GCS-603	P77687A	\$40.75	*	*	*	*
Brown	GCS-19	*	*	P77689A	\$89.25	*	*
Burgundy	GCS-58	*	*	P77690A	\$89.25	*	*
Champagne Gold	GCS-601	P77691A	\$73.95	*	*	*	*
Cobalt Blue	GCS-37	*	*	P77693A	\$89.25	P77801A	\$162.69
Copper	GCS-629	P77694A	\$73.95	*	*	*	*
Dark Green	GCS-56	*	*	P77696A	\$89.25	*	*
Dark Grey	GCS-641	*	*	P77697A	\$89.25	*	*
Forest Green	GCS-66	*	*	P77699A	\$89.25	*	*
Gold	GCS-631	*	*	P77700A	\$179.95	*	*
Green	GCS-186	*	*	P77702A	\$89.25	P77703A	\$162.69
Grey	GCS-31	*	*	P77704A	\$89.25	*	*
Imitation Gold	GCS-105	P77705A	\$73.95	*	*	*	*
Intense Blue	GCS-47	*	*	P77707A	\$89.25	P77708A	\$162.69
Intense Red	GCS-663	*	*	P77709A	\$89.25	P77710A	\$162.69
Kelly Green	GCS-46	*	*	P77712A	\$89.25	*	*
Kumquat	GCS-74	*	*	P77714A	\$89.25	*	*
Lemon Yellow	GCS-155	*	*	P77715A	\$89.25	*	*
Light Grey	GCS-681	*	*	P77716A	\$89.25	*	*
Light Navy	GCS-697	P78958A	\$40.75	*	*	*	*
Light Purple	GCS-668	*	*	P77719A	\$89.25	*	*
Lime Green	GCS-616	P77720A	\$40.75	P77721A	\$89.25	*	*
Navy	GCS-627	*	*	P77732A	\$89.25	*	*
Olympic Blue	GCS-57	*	*	P77733A	\$89.25	P77734A	\$162.69
Orange	GCS-14	*	*	P77735A	\$89.25	*	*
Peacock Blue	GCS-77	*	*	P77736A	\$89.25	*	*
Pink	GCS-643	P77737A	\$40.75	*	*	*	*
Purple	GCS-38	*	*	P77748A	\$89.25	*	*
Raspberry	GCS-133	P77749A	\$40.75	*	*	*	*
Royal Reflex	GCS-687	P78959A	\$40.75	P77752A	\$89.25	*	*
Ruby Red	GCS-53	*	*	P77753A	\$89.25	P77754A	\$162.69
Silver	GCS-620	*	*	P77755A	\$89.25	*	*

* is not available

NESSCO Carries a Complete Line of Sign and Display Substrates

Gerber Foils FX Series

GerberColor FX Foils: Medal Series

Some colors may not be exact matches

Foil Color	Pigment Code	15 Meters	Price
Blue Medal	GCM-747	P77686A	\$111.69
Gold Medal	GCM-731	P77701A	\$111.69
Platinum Medal	GCM-730	P77739A	\$111.69
Red Medal	GCM-783	P77751A	\$111.69
Silver Medal	GCM-720	P77756A	\$111.69

GerberColor FX Foils: Special Effects Series

Some colors may not be exact matches

Foil Color	Pigment Code	45 Meters	Price
Flood Coat White	GCX-010	P77698A	\$99.45
Jet Black	GCX-012	P77711A	\$99.45

GerberColor FX Foils: Finishing Series

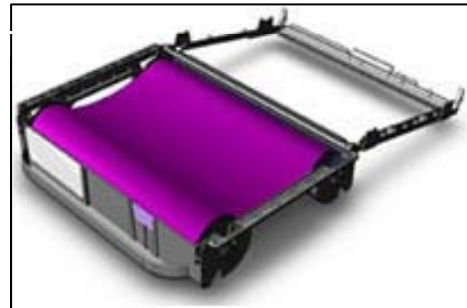
Some colors may not be exact matches

Foil Color	Pigment Code	15 Meters	Price	45 Meters	Price	91 Meters	Price
Abrasion Guard	GCF-114	*	*	P77677A	\$89.25	P77678A	\$162.69
Matte Clear	GCF-334	P77730A	\$50.49	*	*	*	*

GerberColor FX Foils: L.T. Series

Some colors may not be exact matches

Foil Color	Pigment Code	15 Meters	Price
Process Black	GCLT-12	P77722A	\$41.31
Process Cyan	GCLT-607	P77724A	\$41.31
Process Magenta	GCLT-273	P77726A	\$41.31
Process Yellow	GCLT-605	P77728A	\$41.31



GerberGauge™

"The revolutionary means to measure your GerberColor foil."

With GerberGauge, estimating the length remaining on the most popular colors of GerberColor foils has never been easier. This length remaining marking system is imprinted directly along the edge of the GerberColor foil. The markings are displayed as whole numbers – in both meters and yards – and appear approximately every 4 inches (10 cm) over the length of the foil to indicate the minimum amount of foil remaining in the cartridge.

How can you tell if your GerberColor Foil has GerberGauge?

Foils containing GerberGauge can be identified in one of two ways as shown in the images below. Either by the "- A" suffix added to the small lot code sticker found at the base of the cartridge or by the GerberGauge logo printed directly onto the main foil name sticker found on the cartridge. (Eventually all "- A" lot code stickers will be replaced by a GerberGauge logo found on the main foil name sticker.)

* is not available



"- A" means gauge on foil.

OR



New England Sign Supply
Stock Orders Entered by 2 PM ... Same Day UPS Shipping!!!

Gerber Foils FX Series

GerberColor FX Foils: Spot Series

Some colors may not be exact matches

Color	Pigment Code	15 Meters	Price	45 Meters	Price	91 Meters	Price
-------	--------------	-----------	-------	-----------	-------	-----------	-------

GerberColor FX Foils: Spot Series

Some colors may not be exact matches

Sunflower Yellow	GCS-625	*	*	P77757A	\$89.25	*	*
Tan	GCS-39	P77758A	\$40.75	*	*	*	*
Teal	GCS-96	*	*	P77760A	\$89.25	*	*
Terra Cotta	GCS-24	P77761A	\$40.75	*	*	*	*
Tomato Red	GCS-13	*	*	P77763A	\$89.25	P77764A	\$162.69
Traffic Grey	GCS-151	P78905A	\$40.75	*	*	*	*
Violet Purple	GCS-628	P77786A	\$40.75	*	*	*	*
Vivid Blue	GCS-017	P78901A	\$40.75	*	*	*	*
White	GCS-10	*	*	P77788A	\$89.25	*	*
Yellow	GCS-15	*	*	P77789A	\$89.25	P77790A	\$162.69

GerberColor FX Foils: Process Pro Series

Some colors may not be exact matches

Foil Color	Pigment Code	15 Meters	Price	45 Meters	Price	91 Meters	Price
Process Pro Black	GCP-812	*	*	P77740A	\$89.25	P77741A	\$162.69
Process Pro Cyan	GCP-807	*	*	P77742A	\$89.25	P77743A	\$162.69
Magenta	GCP-873	*	*	P77744A	\$89.25	P77745A	\$162.69
Process Pro Yellow	GCP-805	*	*	P77746A	\$89.25	P77747A	\$162.69

GerberColor FX Foils: Transparent Series

Some colors may not be exact matches

Foil Color	Pigment Code	15 Meters	Price	45 Meters	Price	91 Meters	Price
Blue	GCT-617	P78960A	\$53.01	P77765A	\$107.04	*	*
Brown	GCT-629	P77766A	\$53.01	P77767A	\$107.04	*	*
Burgundy	GCT-49	P77768A	\$53.01	P77769A	\$107.04	*	*
Gold	GCT-105	P77770A	\$53.01	P77771A	\$107.04	*	*
Green	GCT-116	P77772A	\$53.01	P77773A	\$107.04	*	*
Orange	GCT-614	P77774A	\$53.01	P77775A	\$107.04	*	*
Plum Purple	GCT-128	P77776A	\$53.01	P77777A	\$107.04	*	*
Red	GCT-643	P77778A	\$53.01	P77779A	\$107.04	*	*
Sapphire Blue	GCT-37	P77780A	\$53.01	P77781A	\$107.04	*	*
Tomato Red	GCT-13	P77782A	\$53.01	P77783A	\$107.04	*	*
Yellow	GCT-625	P77784A	\$53.01	P77785A	\$107.04	*	*

* is not available

New England Sign Supply
 Visit Our Website @www.nesignsupply.com

Gerber Foils FX Series

GerberColor FX Foils: L.T. Series

Some colors may not be exact matches

Foil Color	Pigment Code	15 Meters	Price
Process Black	GCLT-12	P77722A	\$41.31
Process Cyan	GCLT-607	P77724A	\$41.31
Process Magenta	GCLT-273	P77726A	\$41.31
Process Yellow	GCLT-605	P77728A	\$41.31

Gerber FX Cartridge Caddies

Foil Caddies	Part #	Price
Edge FX Foil Cartridge	P78819D	\$19.95
Edge FX Foil Cartridge	P78819D	\$341.15

Gerber Foils Edge 1 & 2 Series

GerberColor Foils: Spot Series

Some colors may not be exact matches

GerberColor Spot(GCS) Series foils are available in a wide range of smooth, consistent pigments that match popular vinyls, films, inks and paints. Plus, GerberColor Spot Series foils are a cost-effective and time-saving alternative to a four-color process for one, two, or three-color jobs and offer color matches that cannot be achieved with a four-color process.

Foil Color	Pigment Code	75 Meter	Price	45 Meter	Price	25 Meter	Price	15 Meter	Price
Apple Green	GCS-196	*	*	P66276A	\$101.94	*	*	P76548A	\$41.77
Aqua	GCS-176	*	*	P53542A	\$101.94	*	*	P76549A	\$41.77
Atomic Red	GCS-293	*	*	P76550A	\$101.94	*	*	*	*
Beige	GCS-49	*	*	P53512A	\$101.94	*	*	P76551A	\$41.77
Black	GCS-12	P79100A	\$152.95	P49085A	\$101.94	*	*	*	*
Brick Red	GCS-603	*	*	P60367A	\$101.94	*	*	P76554A	\$41.77
Brown	GCS-19	*	*	P49087A	\$101.94	*	*	P76555A	\$41.77
Burgundy	GCS-58	*	*	P53487A	\$101.94	*	*	*	*
Champagne Gold	GCS-601	*	*	P66284A	\$187.67	*	*	*	*
Cobalt Blue	GCS-37	*	*	P49093A	\$101.94	*	*	*	*
Copper	GCS-629	*	*	P66280A	\$187.67	*	*	*	*
Dark Green	GCS-56	*	*	P66260A	\$101.94	*	*	*	*
Dark Grey	GCS-641	*	*	P66256A	\$101.94	*	*	*	*
Forest Green	GCS-66	*	*	P53492A	\$101.94	*	*	*	*
Gold	GCS-631	*	*	P60392A	\$187.67	*	*	*	*
Gray	GCS-31	*	*	P49086A	\$101.94	*	*	*	*
Green	GCS-186	*	*	P49095A	101.94	*	*	*	*
Imitation Gold	GCS-105	*	*	P66272A	101.94	*	*	*	*
Intense Blue	GCS-47	*	*	P53497A	101.94	*	*	*	*
Intense Red	GCS-663	*	*	P66268A	101.94	*	*	*	*
Kelly Green	GCS-46	*	*	P60362A	101.94	*	*	*	*
Kumquat	GCS-74	*	*	P53532A	101.94	*	*	P76585A	\$41.77

* is not available

NESSCO Carries a Complete Line of Sign and Display Substrates

Gerber Foils Edge 1 & 2 Series

GerberColor Foils: Spot Series

Some colors may not be exact matches

GerberColor Spot(GCS) Series foils are available in a wide range of smooth, consistent pigments that match popular vinyls, films, inks and paints. Plus, GerberColor Spot Series foils are a cost-effective and time-saving alternative to a four-color process for one, two, or three-color jobs and offer color matches that cannot be achieved with a four-color process.

Foil Color	Pigment Code	75 Meter	Price	45 Meter	Price	25 Meter	Price	15 Meter	Price
Lemon Yellow	GCS-155	*	*	P53537A	\$101.94	*	*	P76586A	\$41.77
Light Grey	GCS-681	*	*	P66252A	\$101.94	*	*	P76587A	\$41.77
Light Navy	GCS-697	*	*	P76588A	\$101.94	*	*	*	*
Light Purple	GCS-668	*	*	P53517A	\$101.94	*	*	P76589A	\$41.77
Lime Green	GCS-616	*	*	P69936A	\$101.94	*	*	P76590A	\$41.77
Navy	GCS-627	*	*	P60382A	\$101.94	*	*	*	*
Olympic Blue	GCS-57	*	*	P49094A	\$101.94	*	*	*	*
Orange	GCS-14	*	*	P49089A	\$101.94	*	*	*	*
Peacock Blue	GCS-77	*	*	P53527A	\$101.94	*	*	P76601A	\$41.77
Pink	GCS-643	*	*	P53522A	\$101.94	*	*	P76602A	\$41.77
Purple	GCS-38	*	*	P49092A	\$101.94	*	*	*	*
Raspberry	GCS-133	*	*	P60377A	\$101.94	*	*	P76609A	\$41.77
Royal Reflex	GCS-687	*	*	GCS687	\$101.94	*	*	P77627A	\$41.77
Ruby Red	GCS-53	*	*	P49091A	\$101.94	*	*	*	*
Silver	GCS-620	*	*	P60387A	\$187.67	*	*	*	*
Sunflower Yellow	GCS-625	*	*	P53502A	\$101.94	*	*	*	*
Tan	GCS-39	*	*	P60372A	\$101.94	*	*	P76616A	\$41.77
Teal	GCS-96	*	*	P53507A	\$101.94	*	*	*	*
Terra Cotta	GCS-24	*	*	P66264A	\$101.94	*	*	P76618A	\$41.77
Tomato Red	GCS-13	*	*	P49090A	\$101.94	*	*	*	*
Traffic Grey	GCS-151	*	*	P78908A	\$101.94	*	*	*	*
Violet Purple	GCS-628	*	*	P69932A	\$101.94	*	*	P76632A	\$41.77
Vivid Blue	GCS-017	*	*	P78904A	\$101.94	*	*	*	*
White	GCS-10	P79101A	\$ 152.95	P49084A	\$101.94	*	*	*	*
Yellow	GCS-15	*	*	P49088A	\$101.94	*	*	*	*

* is not available

GerberColor Foils: Special Effects Series

Some colors may not be exact matches

This line up of 3 exciting fluorescent colors adds impact to signs, labels and decals. Intended for use in the production of interior graphics, point-of-purchase displays, warning graphics, or any interior graphics requiring high visibility even in low-light conditions.

Foil Color	Pigment Code	45 Meter	Price
Flood Coat White	GCX-010	P76453A	\$ 114.48
Jet Black	GCX-012	GCX12	\$ 114.48

New England Sign Supply

MA 800-792-5426

N.E. 800-343-5870

Gerber Foils Edge 1 & 2 Series

GerberColor Foils: Process Pro Series

Some colors may not be exact matches

Customers will find with Process Pro (GCP) Series foils that they can achieve more striking graphics through a richer range of color output. This improved color range is further enhanced when these foils are used in tandem with Gerber's new STC halftone dot pattern for even more photo-realistic images.

Process Pro foils also features GerberGauge™, an easy-to-read, 'length remaining' marking system imprinted along the foil's edge, which clearly indicates - in yards and meters - the amount of material remaining in the cartridge. Whether planning long or short jobs, GerberGauge is the most accurate means to manage your foil-to-application usage.

Process Pro foils are UL® approved and are part of Gerber's Matched Technology System™, which combines the EDGE printing system with the versatility of Gerber's OMEGA™ software and the broadest range of printable materials in the sign-making industry.

Foil Color	Pigment Code	45 Meter	Price	Foil Color	Pigment Code	45 Meter	Price
Process Pro Black	GCP-812	P76283A	\$101.94	Magenta	GCP-873	P76281A	\$101.94
Process Pro Cyan	GCP-807	P76282A	\$101.94	Yellow	GCP-805	P76280A	\$101.94

GerberColor Foils: Transparent Series

Some colors may not be exact matches

This exciting GerberColor foil series offers expanded opportunities for the GERBER EDGE owner. GCT products are outdoor-durable, resin-based thermal transfer foils with the additional quality of being transparent. The GCT foil series are completely compatible with all EDGE READY™ materials and GerberColor foils. Now, more than ever, your creative talents will have new ways to present solutions for your customers.

Foil Color	Pigment Code	45 Meter	Price	Foil Color	Pigment Code	45 Meter	Price
Blue	GCT-617	P60397A	\$118.01	Plum Purple	GCT-128	P60432A	\$118.01
Brown	GCT-629	P60447A	\$118.01	Red	GCT-643	P60407A	\$118.01
Burgundy	GCT-49	P60437A	\$118.01	Sapphire Blue	GCT-37	P60427A	\$118.01
Gold	GCT-105	P60442A	\$118.01	Tomato Red	GCT-13	P60422A	\$118.01
Green	GCT-116	P60452A	\$118.01	Yellow	GCT-625	P60417A	\$118.01
Orange	GCT-614	P60402A	\$118.01				

GerberColor FX Foils: Medal Series

Some colors may not be exact matches

Foil Color	Pigment Code	15 Meters	Price	Foil Color	Pigment Code	15 Meters	Price
Blue Medal	GCM-747	P77686A	\$135.39	Red Medal	GCM-783	P77751A	\$135.39
Gold Medal	GCM-731	P77701A	\$166.76	Silver Medal	GCM-720	P77756A	\$166.76
Platinum Medal	GCM-730	P77739A	\$166.76				

New England Sign Supply

Call 800-792-5426 MA 800-343-5870 N.E or email sales@nesignsupply.com

Gerber Foils Edge 1 & 2 Series

GerberColor Foils: Finishing Series

Some colors may not be exact matches

GerberColor Finishing foil series are a line of foils designed to protect, enhance and add effects to GERBER EDGE produced graphics.

Foil Color	Pigment Code	45 Meter	Price	25 Meter	Price
Abrasion Guard	GCF-114	P55151A	\$101.94	*	*
Matte Clear	GCF-334	*	*	P66870A	\$70.57

GerberColor Foils: L.T. Series

Some colors may not be exact matches

Used in conjunction with Gerber Heat Transfer Paper, these spot and process GerberColor foils produce transferable graphics, which are then heat-pressed and applied to garments, textiles, caps and a wide variety of specialty items made of 100% cotton, cotton/polyester blends and 100% polyester.

Foil Color	Pigment Code	50 Meter	Price	45 Meter	Price
Blue	GCLT-647	*	*	P59737A	\$93.57
Green	GCLT-606	*	*	P59732A	\$93.57
Process Black	GCLT-12	P59747A	\$104.03	*	*
Process Cyan	GCLT-607	P59757A	\$104.03	*	*
Process Magenta	GCLT-273	P59752A	\$104.03	*	*
Process Yellow	GCLT-605	P59742A	\$104.03	*	*

GerberColor Foils: ColorSet Series

Some colors may not be exact matches

ColorSet foils have been designed utilizing Gerber's Matched Technology System - the perfect integration of software, hardware, and materials, which provide a solution for your occasional short-term, GERBER EDGE graphic needs. Whether the job is promotional, short term interior or exterior signs, banner graphics, or novelty items, ColorSet foils provide the ideal performance match to application needs.

Foil Color	Pigment Code	50 Meter	Price	45 Meter	Price
Black	CSS-12	*	*	P69593A	\$71.35
Cobalt Blue	CSS-37	*	*	P67691A	\$71.35
Green	CSS-186	*	*	P67695A	\$71.35
Process Black	CSP-12	P67112A	\$81.55	*	*
Process Cyan	CSP-607	P67124A	\$81.55	*	*
Process Magenta	CSP-273	P67116A	\$81.55	*	*
Process Yellow	CSP-605	P67120A	\$81.55	*	*
Warm Red	CSS-253	*	*	P67699A	\$71.35
Yellow	CSS-15	*	*	P67703A	\$71.35

* is not available

New England Sign Supply
Stock Orders Entered by 2 PM ... Same Day UPS Shipping !!!

Gerber Edge Ready Materials

3M™ Scotchcal™ Series 220 Premium Film High performance, 2 mil, cast vinyl custom formulated for Gerber by 3M. Exceptional durability and conformability to irregular surfaces. Ideal for all types of outdoor applications. Available in 85 colors. Common uses include vehicle applications, banners, signs, and graphics of all kinds.

Roll Size	Price
15" x 10 yd	\$50.10
15" x 50 yd.	\$194.07

Gerber HP Series 220 colors

Solid Colors

220-10 White	220-48 Purple	220 100 Oyster	220-105 Imitation Gold
220-11 Pearl Grey	220-49 Beige	220-135 Primrose Yellow	220-130 Eggshell
220-12 Black	220-53 Cardinal Red	220-138 Pale Lavender	220-133 Raspberry
220-13 Tomato Red	220-54 Light Orange	220-139 Saddle Brown	220-134 Intense Orange
220-14 Bright Orange	220-56 Dark Green	220-193 Mauve	220-145 Chrome Yellow
220-15 Bright Yellow	220-57 Olympic Blue	220-196 Apple Green	220-151 Traffic Grey
220-17 Vivid Blue	220-58 Burgundy	220-197 Light Navy	220-163 Dark Magenta
220-19 Deep Mahogany Brown	220-63 Geranium	220-223 Matte Red	220-173 Salmon Pink
220-20 Matte White	220-64 Apricot	220-253 Warm Red	220-176 Aqua
220-21 Palm Oyster	220-66 Forest Green	220 263 Perfect Match Red	220-177 Shadow Blue
220-22 Matte Black	220-68 Dark Burgundy	220-307 Dark Aqua	220-186 Bright Green
220-24 Terra Cotta	220-69 Duranodic	220-347 Powder Blue	220-187 Wedgewood Blue
220-25 Sunflower	220-77 Peacock Blue	220-357 Bermuda Blue	220-266 Cactus Green
220-27 Navy	220-86 Robin Egg Blue	220-367 Celestial Blue	220-273 Process Magenta
220-29 Russet Brown	220-87 Royal Blue	220-377 Blue Bird	220-276 Bottle Green
220-31 Medium Gray	220-88 Violet	220-387 Periwinkle	220-283 Cranberry
220-37 Sapphire Blue	220-89 Sandstone	220-397 Dark Blue	220-286 Jade Green
220-38 Royal Purple	220-90 Antique White	220-407 Matte Blue	220-293 Atomic Red
220-39 Tan	220-94 Coral	220-417 Sky Blue	220-296 Eucalyptus
220-41 Dark Gray	220-96 Teal	220-101 Nimbus Grey	
220-46 Kelly Green	220-98 Dark Violet	220-103 Magenta	
220-47 Intense Blue	220-99 Fawn	220-104 Dark Coral	

Metallic Colors

220-120 Silver	220-208 Burgundy	220-217 Dark Blue	220-231 Light Gold
220-131 Gold	220-209 Dark Brown	220-218 Light Rose	220-237 Silver Blue
220-201 Slate	220-211 Charcoal	220-227 Bright Blue	
220-206 Pine Green	220-216 Sage Green	220-229 Copper	

Enamel Receptive

3M Scotchcal Series 220 Clear Enamel Receptive. This cast, 2 mil clear vinyl with a clear adhesive is ideally suited for a variety of first or second surface (reverse print as a clear substrate) applications.

Roll Size	Price
15" x 10 yd	\$50.10
15" x 50 yd.	\$194.07

Visit Our Website @ www.nesignsupply.com

Gerber Edge Ready Materials

3M™ Scotchcal™ Series 230 Translucent Film

Backlit and internally illuminated signs, window graphics, and awnings made from this 2 to 3 mil high performance cast vinyl display rich, vivid color in both reflected and transmitted light - indoor and outdoor, day and night. Known for its uniform color consistency and low-gloss finish that eliminates glare. Available in 50 colors.

Gerber HP Series 230 colors

Translucent Colors

230-005 Ivory	230-78 Vivid Rose	230-25 Sunflower	230-36 Dark Blue
230-118 Mulberry	230-131 Metallic Gold	230-236 Turquoise	230-157 Cobalt Blue
230-121 Silver	230-73 Dark Red	230-115 Lemon Yellow	230-87 Royal Blue
230-133 Raspberry	230-141 Gold Nugget	230-246 Teal	230-97 Delft Blue
230-149 Light Beige	230-53 Cardinal Red	230-015 Yellow	230-337 Process Blue
230-20 White	230-108 Pink Laveder	230-125 Mango	230-57 Olympic Blue
230-22 Black	230-43 Lt. Tomato Red	230-26 Green	230-127 Intense Blue
230-49 Burgundy	230-74 Kumquat	230-106 Apple Green	230-147 Deep Sky Blue
230-59 Dark Brown	230-44 Orange	230-156 Vivid Green	230-128 Plum Purple
230-61 Slate Grey	230-33 Red	230-76 Holly Green	230-167 Blue
230-63 Russet Brown	230-143 Poppy Red	230-116 Bright Jade Green	
230-69 Duranodic	230-84 Tangerine	230-146 Kelly Green	
230-71 Shadow Grey	230-83 Scarlet Red	230-126 Emerald Green	



Roll Size	Price
15" x 10 yd	\$90.10
15" x 50 yd.	\$385.29

3M™ Controltac™ Series 180 Plus Repositionable Film

2 mil gloss vinyl with a pressure activated adhesive to simplify application of graphics on flat, corrugated and riveted surfaces. Pigmented adhesive (except Bright Yellow) provides maximum opacity. The best solution for large fleet markings and graphics. Available in 9 colors: Black, Bright Yellow, Cardinal Red, Deep Mahogany Brown, Kelly Green, Olympic Blue, Sapphire Blue, Tomato Red, and White.

15" x 10 yd	15" x 50 yd	30" x 10 yd	30" x 50 yd
\$70.62	\$297.97	\$119.88	\$586.70

NESSCO Carries a Complete Line of Sign and Display Substrates

Gerber Edge Ready Materials

3M™ Scotchcal™ Series 210 Deluxe Silver & Deluxe Gold Vinyl

Outdoor-durable, mirror-finish vinyl designed by 3M for use with the EDGE®, EDGE 2 and GerberColor™ Foils. Perfect for vehicle markings, specialty graphics, and signs of all kinds -- its clear adhesive system also makes it suitable for beautiful second-surface window applications.	Deluxe Gold		Price
	15" x 10 yd		\$215.45
	15" x 50 yd		\$1,009.93
	Deluxe Silver		Price
	15" x 10 yd		\$203.67
	15" x 50 yd		\$964.03

3M™ Scotchcal™ Series 210 Fluorescent Specialty Film

Vibrant, attention-getting, 3 mil films provide excellent visibility under normal or low-light conditions. Perfect for point-of-purchase, window graphics, displays, decals, and warning labels. This film has a one-year outdoor durability, 6 months longer than most competitive products. Available in 5 colors.	Colors Available: Lime Yellow, Lime Green, Pink, Red Orange, and Yellow Orange	
	Roll Size	Price
	15" x 10 yd	\$90.04

3M™ Scotchlite™ Series 280 Reflective Sheeting

Designed for markings requiring high visibility, both day and night. Common uses include fleet markings, real estate signs, and graphics of all kinds. Available in 11 colors: Black, Blue, Gold, Green, Lemon Yellow, Light Blue, Orange, Red, Ruby Red, White and Yellow.	Roll Size	Price
	15" x 10 yd	\$152.47
	15" x 50 yd	\$679.98

3M™ Scotchlite™ Series 280i White Reflective Sheeting

This white reflective material is designed to provide optimal printing results when used with the GERBER EDGE® and GerberColor™ Foils.	Roll Size	Price
	15" x 10 yd	\$152.47
	15" x 50 yd	\$679.98

Gerber HoloGraphix™

Metallized, prismatic vinyl perfect for ad specialty, point of purchase, novelty items, etc. Available in four eye-catching patterns: Kaleidoscope, Mosaic, Silver Sheen, and Crystal Blizzard.	Roll Size	Price
	15" x 10 yd	\$50.45
	15" x 50 yd	\$227.03

Gerber InstaChange™

Durable, removable, 5 mil vinyl custom formulated by 3M. The film's unique adhesive allows for removal up to two years after application without the use of chemicals and without leaving a residue. Applications include vehicles, tradeshow displays, and changeable graphics systems.	White InstaChange™		Price
	15" x 10 yd		\$215.45
	15" x 50 yd		\$1,009.93
	Reflective InstaChange™		Price
	15" x 10 yd		\$203.67
	15" x 50 yd		\$964.03

Gerber Vision™ Perforated Window Film

2 mil window material that has been custom formulated by 3M for Gerber to meet the growing requests for applications such as one-way graphics, retail window fronts, and other clear-substrate displays.	Roll Size	Price
	15" x 10 yd	\$154.30
	15" x 50 yd	\$741.80

NESSCO Carries a Complete Line of Sign and Display Substrates

Gerber Edge Ready Materials

Gerber ImageCast™

This clear, 2 mil, cast vinyl has been custom formulated by 3M to Gerber specifications. This film is ideally suited for reverse-printed second-surface applications or for the production of graphics and signs of all kinds.

Roll Size	Price
15" x 10 yd	\$51.45
15" x 50 yd	\$205.91

Gerber ImageCast™ Eclipse™

This versatile, 2 mil, semi-transparent tinted vinyl with transparent synthetic liner is custom formulated by 3M for Gerber. Ideal for window graphics, vehicle graphics, decals and signs of all kinds where realistic shadowing and high visual impact are desired.

Roll Size	Price
15" x 10 yd	\$49.50
15" x 50 yd	\$205.91

GerberMag™

15 mil magnetic material. Applications include refrigerator magnets, magnetic business cards, and ad specialty items.

Roll Size	Price
15" x 10 yd	\$96.35
15" x 50 yd	\$372.10

Gerber AutoMag™

24 mil vehicle strength magnetic material. Print and cut any design for custom vehicle magnets.

Roll Size	Price
15" x 10 yd	\$121.27
15" x 50 yd	\$471.77

Gerber PlastiGraphix™ PVC-10HG

A custom formulated, semi-rigid, 10 mil PVC material. It features a bright white and high gloss (HG) printing surface useful for creating a wide variety of directly printed finished applications such as door hangers, table tents, shelf talkers, ID tags and menu inserts.

Roll Size	Price
15" x 10 yd	\$121.27
15" x 50 yd	\$471.77

Gerber PlastiGraphix™ LexEdge™ II

10 mil velvet/polished Lexan® that is designed to be used with the EDGE® and GerberColor™ Foils. Applications include keyboard overlays, membrane switches, architectural and display work. You can even print LexEdge II with small text!

Roll Size	Price
15" x 10 yd	\$110.73
15" x 50 yd	\$442.97

EDGE Positive™

Crystal clear, 7 mil, polyester film designed for use with the EDGE, EDGE 2, GerberColor™ Spot Black and Jet Black foils in the production of screenprint film positives.

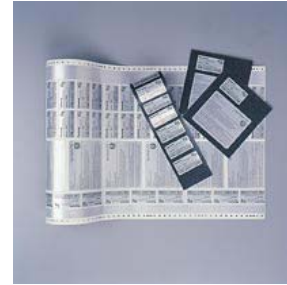
Roll Size	Price
15" x 10 yd	\$38.39
15" x 50 yd	\$153.55

New England Sign Supply
Stock Orders Entered by 2 PM ... Same Day UPS Shipping !!!

Gerber Edge Ready Materials

Gerber Label Stock White & Clear

Polyester material used in identification markings. Valuable material that is UL recognized for many high temperature applications including marking of hot factory pipes or the identification of computer terminals and equipment. Available in clear and white (1 or 2 mil) and matte silver (2 mil only).



Roll Size	Clear 1 mil	Roll Size	White 1 mil
15" x 10 yd	\$35.65	15" x 10 yd	\$38.60
15" x 50 yd	\$131.61	15" x 50 yd	\$142.58
Roll Size	Clear 2 mil	Roll Size	White 2 mil
15" x 10 yd	\$44.53	15" x 10 yd	\$49.57
15" x 50 yd	\$164.51	15" x 50 yd	\$183.16

Gerber Label Stock Brushed Gold & Brushed Silver Polyester Material

1 or 2 mil polyester material developed for use in the sign industry and to produce identification markings, nameplates, and plaques. Adds a brushed metal look to your graphics. UL approved for use in many high temperature applications.



Roll Size	Brushed Gold 1 mil	Roll Size	Brushed Silver 1 mil
15" x 10 yd	\$36.52	15" x 10 yd	\$36.52
15" x 50 yd	\$137.65	15" x 50 yd	\$137.65
Roll Size	Brushed Gold 2 mil	Roll Size	Brushed Silver 2 mil
15" x 10 yd	\$44.15	15" x 10 yd	\$44.15
15" x 50 yd	\$175.76	15" x 50 yd	\$175.76

Static Cling

Designed to adhere to glass without adhesive. These specialty vinyls are ideally suited to work with the EDGE® and EDGE 2 for interior applications. They can also be decorated with vinyl graphics. Available in clear and white.

Roll Size	Clear Static Cling
15" x 10 yd	\$34.51
15" x 50 yd	\$109.41
Roll Size	White Static Cling
15" x 10 yd	\$35.58
15" x 50 yd	\$112.35



New England's Full Line Sign and Digital Distributor

Gerber Edge Ready Materials

Gerber ImageCal™ "P"

Durable, clear, calendered, 4 to 5 mil vinyl with a permanent adhesive ideally suited for interior and short term exterior signs, second-surface applications, point-of-purchase and window displays.

Roll Size	White 1 mil
15" x 10 yd	\$38.60
15" x 50 yd	\$142.58

GerberGuard™

Have you ever wanted to apply printed or cut graphics on a vehicle near the gas tank? The problem is that gasoline spills will degrade the adhesive of your vinyl. That kind of application calls for GerberGuard – a petrochemical-resistant vinyl overlaminate. You can apply GerberGuard right on top of your printed or cut graphics and then sandwich cut the entire composite. GerberGuard is resistant to gasoline, oil, and many types of chemicals.

Roll Size	Overlaminate
15" x 10 yd	\$54.55
15" x 50 yd	\$223.12



Gerber UVGuard™

The amazing thing about Gerber UVGuard is that it will allow application of EDGE® / GerberColor™ graphics at any exposure angle. That means that you can apply graphics printed on 3M™ Scotchcal™ Series 220 and 225 to the roof of a car if you want! UVGuard is a TEDLAR®-based overlaminate that blocks the effects of ultraviolet light. In addition, UVGuard features a petrochemical-resistant adhesive system that will protect graphics from gasoline and chemical spills.

Roll Size	UV Guard
15" x 10 yd	\$60.84
15" x 50 yd	\$269.76

Gerber StrikeGuard™

Gerber StrikeGuard overlaminate has been developed to provide extra protection from forceful impact for EDGE-printed graphics, in response to the needs of "extreme sport" applications and decals. In addition, when used with Gerber QUANTUM™ 2000 as the printable base film, the two films together make an ideal system for creating durable helmet decals. Use Gerber StrikeGuard overlaminate to protect graphics applied to helmets and hard hats, ATV's, motocross, jet skis, snowmobiles, off-road vehicles and heavy equipment graphics. Now your extreme sport customers can have graphics as tough as they are.



Roll Size	UV Strike Guard
15" x 10 yd	\$42.77
15" x 50 yd	\$180.96

New England Sign Supply
Stock Orders Entered by 2 PM ... Same Day UPS Shipping !!!

New England Sign Supply

MA (800)-792-5426
N.E. (800)-343-5870

Neon Products:

EGL Glass & Accessories
Voltarc Glass & Accessories
Diversified Components
Electrobits Neon Components
Westrim Neon Components
Neon PowerPro

ClearVue Tube Supports

Transco Neon Products

Ballast Wire

Ballast / Transformers:

Advanced Products
Allanson International
France
TFT Electronic Transformers.

LED Systems:

Gelcore Tetra System
Voltarc Optocron LED Displays

Lighting Products:

Osram HO Lamps
EGL/Voltarc Long Lamps
U-Lamps
Holophane Lighting Systems
Kulka Sockets
Floraflood Fixtures

Carving Substrates:

SignFoam 3
Allwood Western Red Cedar
Komacel Foam PVC
Extira

Plastic Substrates:

Acrylic SG, GP and FF
GE Solar Grade Lexan
Komatex PVC
Coroplast
HI-Impact Polystyrene

Aluminum Products:

Prefinished Aluminum Sheet
Aluminum Sign Blanks
Dibond/Alucobond Aluminum Sheet
Green 2 lb. U-Channel Sign Post
Alumilite/Econolite Sheet
Nudo Nu-Edge Board
Metal Wood Sheet

Graphic Vinyl Films:

Gerber Vinyls and Specialty Products
FDC Vinyls and Specialty Films
3M Graphic Films
SignGold Specialty Films
Gerber Edge Foils

Commercial Graphic Products

Transferite Ultra 582 / 592 / 1310
Application Fluids / Remover
Anchor Sandblast Stencil
One Shot UV Spray

Digital Products:

Neschen Accutrech Fabrics
Neschen Laminates
G.E. Lexan Films
Gatorfoam
Roland Media

Line Card

Adhesives / Fasteners:

Lord Adhesive Products
Gorilla Glue
Weld-On Products
CyberBond Cyanoacrylate
Henkel PowerGel
Bostik Silicones
Pop Rivets & PK Screws
AVK Fasteners
3M Tapes

Miscellaneous Products:

Changeable Letters and Track
MSI Magnetic Sheeting
Magnetic Tape
Eggcrate Lighting Panels
Bond And Kraft Paper
Banners
Guisto Manetti Gold Leaf
Slow and Quick Size
Damp Location Awning Fixtures
White Raincoat
DuraCaps Decorative Post Caps
Lettering Brushes
Dura*Finish Epoxy Resin

Services:

Same Day UPS Shipments
Automated UPS Tracking
Delivery to most of New England and Albany New York Region
Plastic Cutting
Matthews Color Paint Matching
Matthews Custom Paint Mixing

Aluminum Extrusion:

Signcomp Commercial / Architectural
Excellart Sign Kits
1" x 1" Aluminum Frame
Charleston Architectural

Paint Products:

Matthews Acrylic Polyurethane
One Shot Lettering
Chromatic Bulletin
Jay Cooke Primer
SignFoam Sign*Prime
Spraylat Lacryl Paint
Trikoplex Textured Coating

Frames & Hangers:

Plasticade Sign Frames
Real Estate Frames
Standard / Deluxe Scroll Brackets
SteelBrite Sign Hangers
Step Stakes

Rigid & Flexible Faces:

Lexan Pan Faces
Cooley Sign Substrates
3M Panaflex

Sign Equipment:

Gerber Edge and Plotters
Roland Printers and Plotters
Gerber Omega Software
SignLab Software
Gerber Sabre Routers
Roland Engravers

Banner Accessories

Grommet Machine

The PM5 machine is an industry standard bench-mounted machine. It is made of tough ductile iron and has a deep throat with a longer padded handle. The machine uses standard 3/8" diameter shank dies that set self piercing grommets up to size #4.



Call for pricing.

Grommets

Self-Piercing Grommets and Washers: Our self-piercing grommets, used in conjuncture with Fasnap's exclusive washer design, eliminate the need to pre-punch a hole. Grommets are set in a single action.

2 Grommet



100 Bag	500 Bag
\$25.00	\$75.00

Banner Hold-on Clips



Each
\$0.80

Holdon instant clip-on eyelets eliminate the need for hems and traditional eyelets. Perfect for digital printed banners.

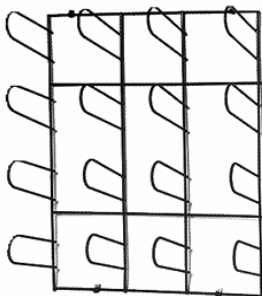
Banner Tape

Banner tape is a 2-sided, high tack tape for hemming banners.



1" x 72 yd.	\$18.70	Roll
-------------	----------------	------

Vinyl Wall Mount Racks



Heavy gauge wire constructed rack holds 16 rolls of 3 inch core diameter. The rack is durable enough to hold up to 16 rolls of 30" x 50 yd. material.

Rack	\$49.00	Each
------	----------------	------



New England Sign Supply
Stock orders entered by 2 PM ... Same day UPS shipping!!!



New England's Source For Digital Products

NEW ENGLAND SIGN SUPPLY
7 ROESSLER ROAD
WOBURN MA 01888
TEL. (781)-938-1498
FAX (781)-935-3194

WINDOW
GRAPHICS

ARCHITECTURAL
GRAPHICS



WALL
MURALS

VEHICLE
GRAPHICS



When it comes to digital
printing... We have you covered.